

# Exploring the challenges in developing a multi-criteria assessment for smart local energy systems

Christina Francis<sup>1,2\*</sup>, Bjarnhéðinn Guðlaugsson<sup>1\*\*</sup>, R. Camilla Thomson<sup>1</sup>, David Ingram<sup>1</sup>

1. School of Engineering, Institute for Energy Systems University of Edinburgh, Edinburgh UK

2. School of the Built Environment and Architecture, London South Bank University, London UK

\*c.francis@ed.ac.uk \*\*b.gudlaugsson@ed.ac.uk

**Presenter:** Bjarnhedinn Gudlaugsson

*28<sup>th</sup> of September 2022*

*Session: Multiple Benefits*



**Energy Evaluation Europe 2022 Conference**

**Wednesday 28 - Friday 30 September 2022**

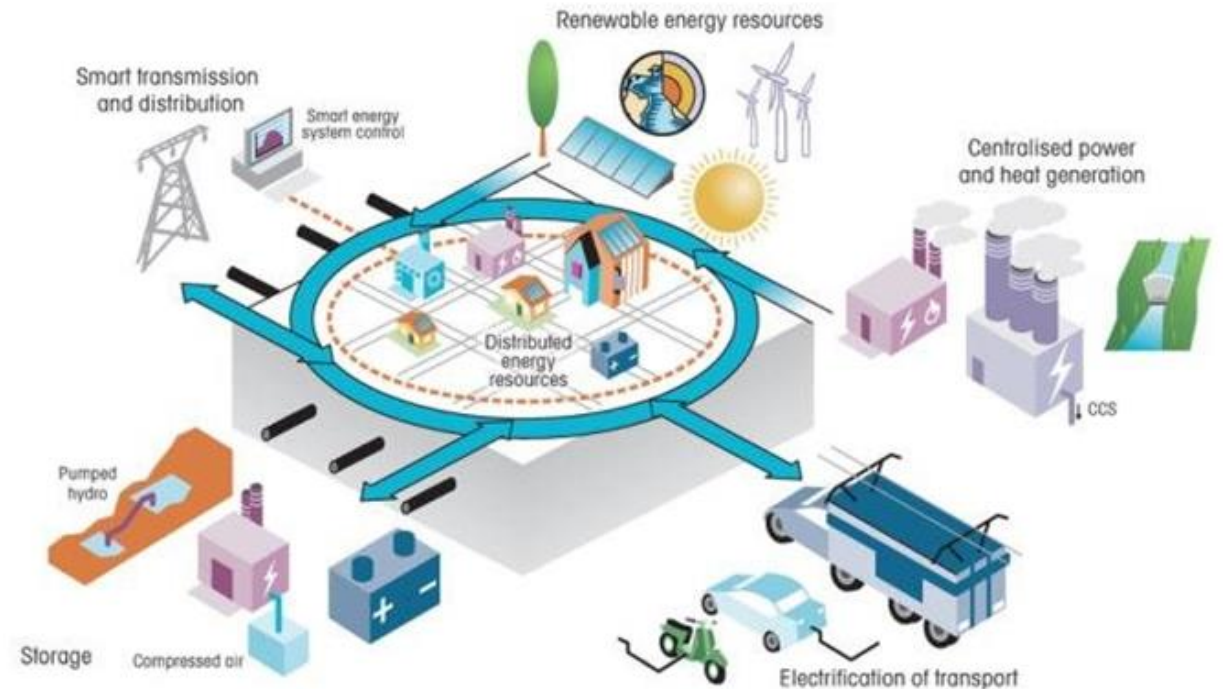


Edf Lab Paris-Saclay  
Bd Gaspard Monge  
91120 Palaiseau



# This Research Context

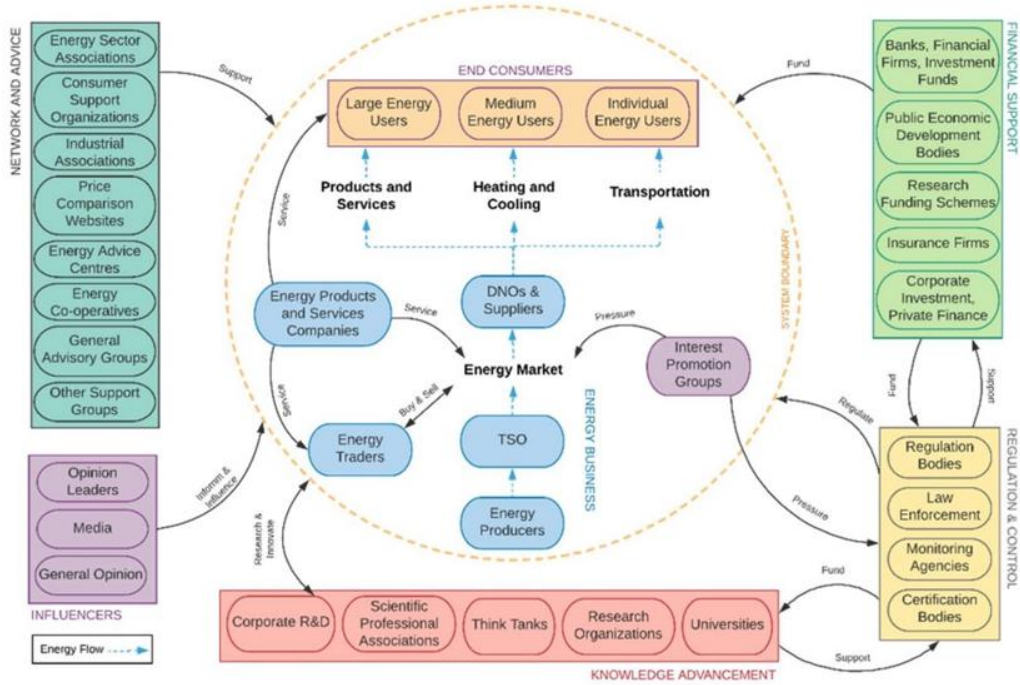
- There has been **increased attention** to the **development and deployment of SLES** due to the *influence of the energy transition on local energy planning strategies* with an emphasis on *decarbonisation, renewable generation and smarter, more efficient energy systems*.
- **The development and deployment of SLES** are enabled by *energy system strategies* that include *retrofitting, re-designing and improving energy systems through more digitalisation and decentralisation*.
- *This facilitates a transition in energy production, supply and distribution, and energy resource utilisation and consumption* [1-3]



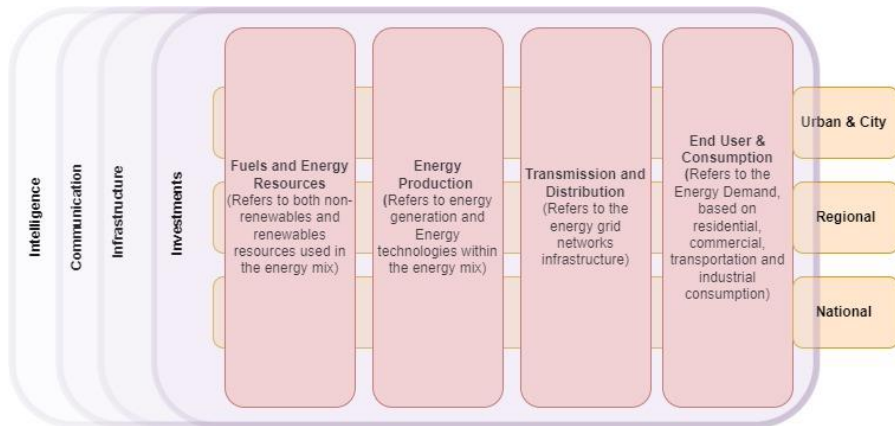
Energy System Characteristics and Management [4]

# This Research Context

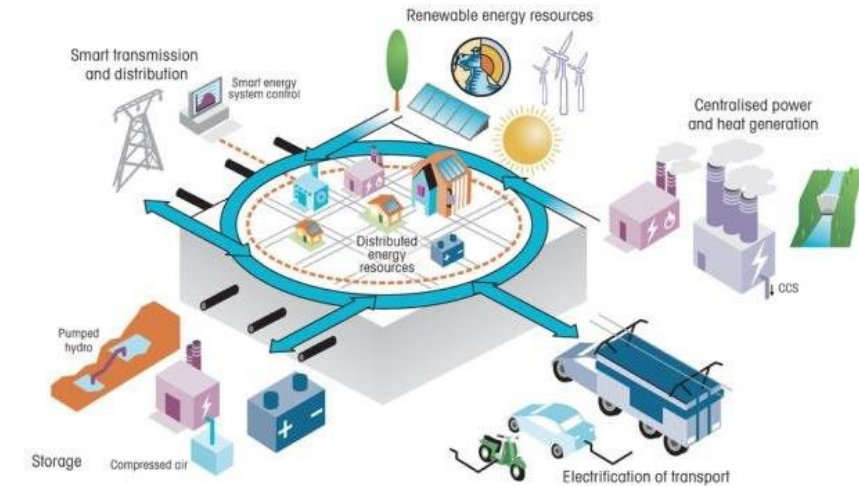
Energy System Stakeholders Map [5]



Energy System Characteristics [6]  
[Layers, Roles, Level]]



Assessment Criteria & Assessment Tool



Energy System Characteristics and Management [4]

# Research Process

## Identification of Themes and Criteria

Key Themes
Business & Economics
Data Management
Technical Performance
People and Living
Environment
Governance

**Phase 1 –**  
Literature Review & Stakeholder Engagement

## Semi-Structure Interview with Experts



**Phase 2 –**  
Stakeholder Engagement

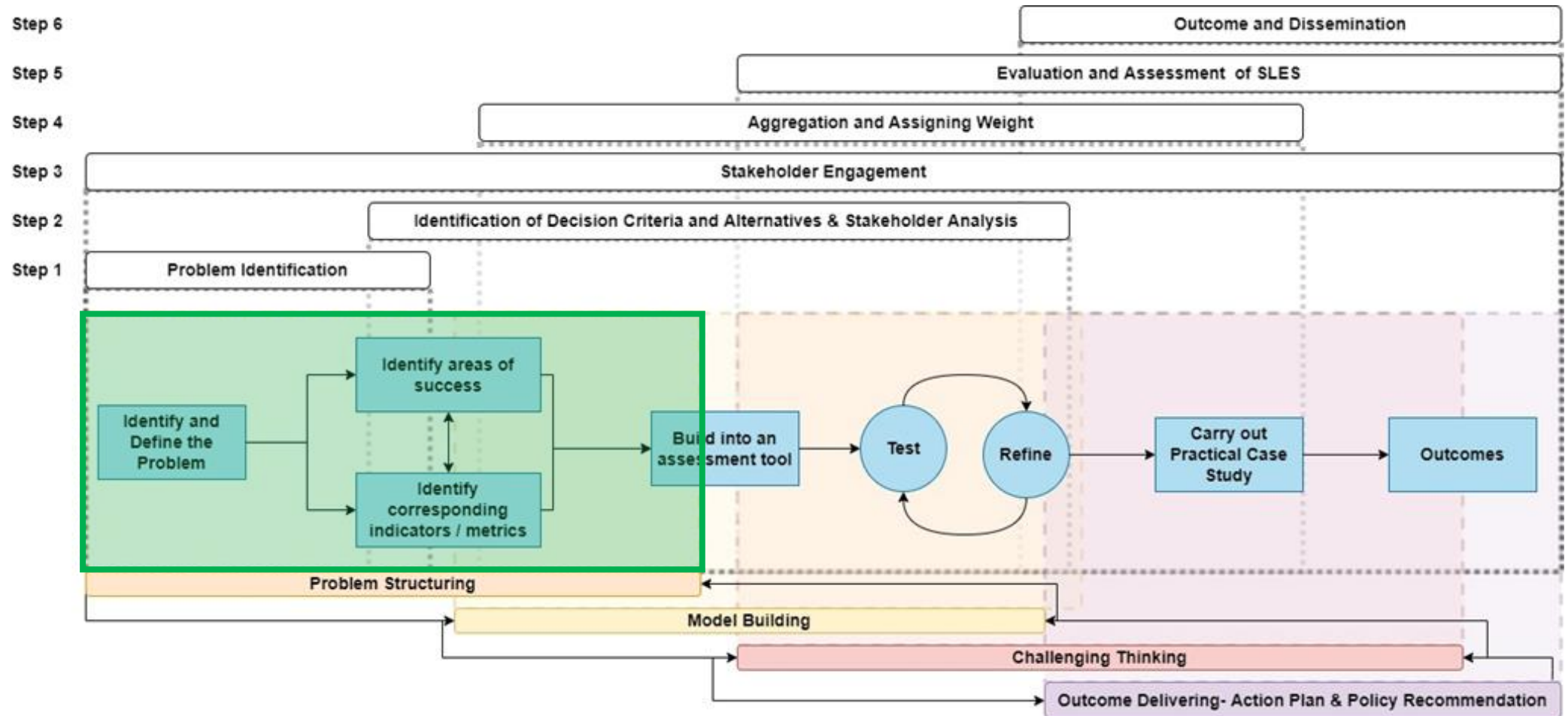
## Outcomes - Challenges



**Phase 3 –**  
Analysis



# Where does this research fit in MCA-SLES Development Phase

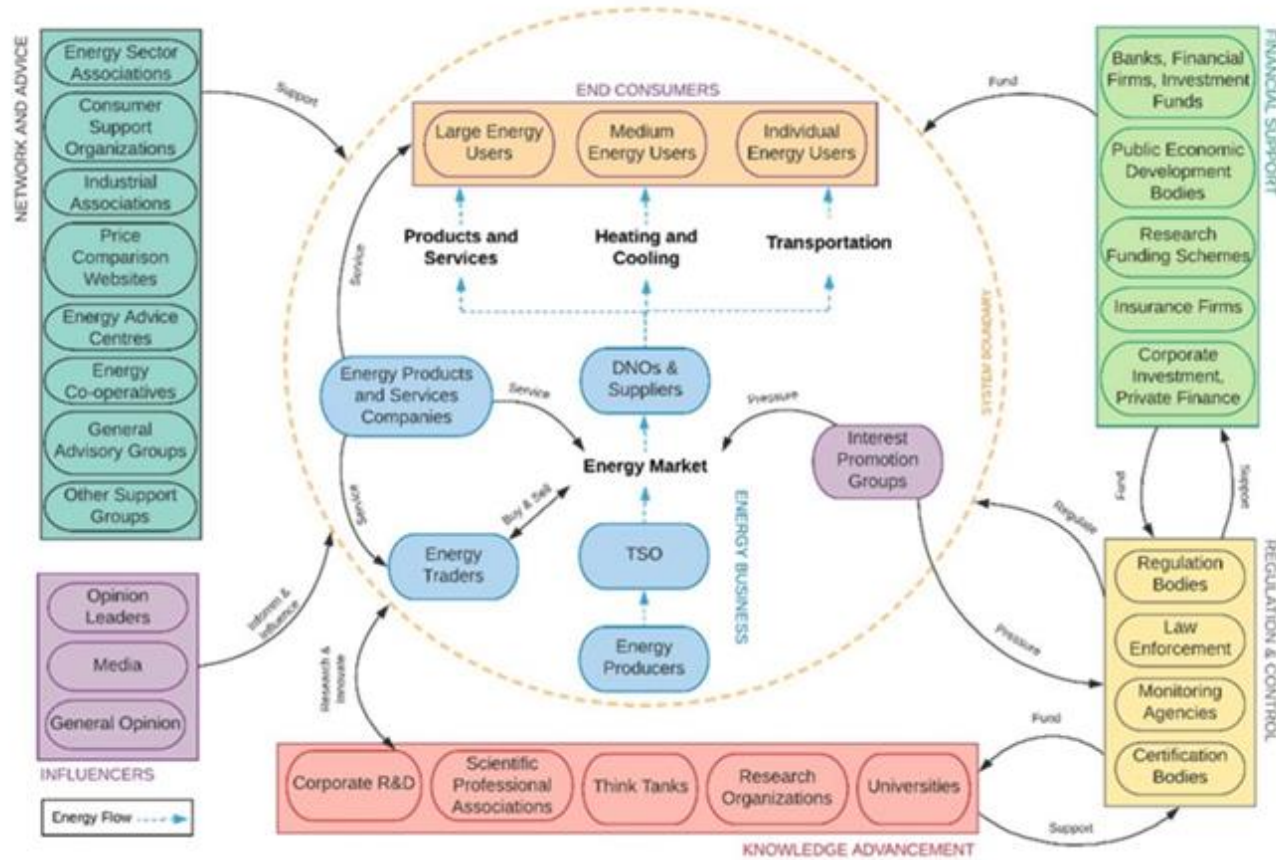


MCA Development Process Chart, highlighting the six steps and four MCA development phases [7]

# Key Results

- One of the primary challenges identified by the experts interviewed was **saturation or stakeholder burnout** in terms of stakeholder engagement.
- **Data collection challenges** were also identified for many criteria such as fuel poverty, access to capital, debt-equity ratio, grid management, ecosystem and human health impacts,
- Specific challenges raised by the **breadth of the SLES definition**, which will introduce challenges for assessing core assessment themes, sub-themes and metrics across different projects.
- The experts also highlighted that having a **clear definition** of the core assessment themes, sub-themes and metrics is important and **reduces miscommunication** and ensures that the right data is collected and that it is representative (particularly with regards to the project stakeholders and end-users) to ensure quality and realistic outputs.

# Challenge 1 - Stakeholder Burnout



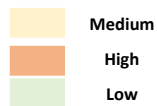
Energy System Stakeholders Map [5]



Stakeholder Engagement

# Challenge 2 - Data Collection Issues

Key Themes	The Degree of Challenge
Business & Economics	High
Data Management	Medium
Technical Performance	Medium
People and Living	High
Environment	High
Governance	Low



Key Themes & Identified Degree of Challenge

The experts also **highlighted challenges in accessing data for specific metrics**; for example, data on *access to capital* or the *debt-equity ratio* may be difficult to access, as it is commercially sensitive for the relevant investment funds.

There was agreement among the experts that understanding and evaluating the environmental aspects are important; however, they **identified that data availability and collection would be the principal challenges in assessing all the criteria related to the environment theme.**

The three experts considered that **reliability was not an easy criterion to measure**, particularly the suggested metrics of availability and quality.



# Challenge 3 - Broad Definition and/or Limited Scope of Assessment Criteria

Key Themes	The Degree of Challenge
Business & Economics	Medium
Data Management	Medium
Technical Performance	High
People and Living	Medium
Environment	High
Governance	Low

Medium  
 High  
 Low

**Key Themes & Identified Degree of Challenge**

Expert No. 6 also highlighted that **this theme was missing a criteria or metric** that focuses on the consumer or customer and assesses issues concerning retailing, finance, data legislation and consumer protection.

One key recommendation for **this theme** was that measurement of energy services **needs to be further divided** into energy storage, generation and demand (such as demand-side management)

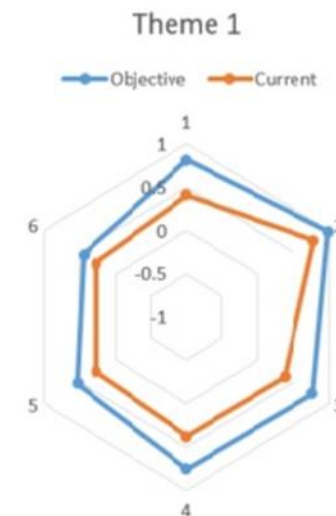
One challenge identified here was that the SLES experts tended to **exclude certain criteria** as being challenging for the SLES to implement, such as scalability or maturity

# Next Step in MCA-SLES Development

- The next steps in developing an MCA-SLES tool will focus on
  - A. Refined** core assessment themes, corresponding sub-themes and associated criteria/metrics.
  - B. Develop a practical application** of the tool to utilise *to carry out case study assessments*.
  - C. Carry out case studies**, where SLES projects are provided with the opportunity to assess and monitor the SLES implementation and deployment process in relation *to the set forward by core assessment themes*.

Achieving Objective		
Difference (%)		
	-0.412	-41%
	-0.195	-20%
	-0.382	-38%
	-0.378	-38%
	-0.264	-26%
	-0.176	-18%

% towards Achieving an Objective



Benchmark with Assessment Criteria

Thank you for your attention!  
Have a great day 😊

For any questions:

Bjarnhedinn Gudlaugsson - [b.gudlaugsson@ed.ac.uk]

Christina Francis - [c.francis@ed.ac.uk]

For EnergyRev WP5.2 – [[Multi-criteria Assessment \(energyrev.org.uk\)](https://energyrev.org.uk)]



**Energy Evaluation Europe 2022 Conference**

Wednesday 28 - Friday 30 September 2022



Edf Lab Paris-Saclay  
Bd Gaspard Monge  
91120 Palaiseau



# Acknowledgements:

This research is supported through the UK Research and Innovation programme, Industrial Strategy Challenge Fund and forms part of the wider research undertaken by the EnergyREV consortium aimed at providing evidence for scaling up smart local energy systems.

# Reference:

1. Rae, C., Kerr, S., & Maroto-Valer, M. M. (2020). Upscaling smart local energy systems: A review of technical barriers. *Renewable and Sustainable Energy Reviews*, 131, 110020.
2. Ford, R., Maidment, C., Vigurs, C., Fell, M. J., & Morris, M. (2021). Smart local energy systems (SLES): A framework for exploring transition, context, and impacts. *Technological Forecasting and Social Change*, 166, 120612.
3. Francis, C., Thomson, R. C., Hansen P. & Ingram, D. (2022). Weighting the Key Performance Indicators of Smart Local Energy Systems: Discrete Choice Experiments, *Energies*, submitted.
4. Azgomi, Hamid & Jamshidi, Mo. (2018). A Brief survey on Smart Community and Smart Transportation. <https://doi.org/10.48550/arXiv.1812.00986>
5. Francis, C., Sierra Costa, A., Thomson, R. C., & Ingram, D. (2020). *Developing the framework for multi-criteria assessment of smart local energy systems*. Paper presented at Energy Evaluation Europe 2020. <https://energy-evaluation.org/wp-content/uploads/2020/07/eee2020-paper-francis-christina-20-51-francis-christina.pdf>
6. Gudlaugsson, B., Abi Ghanem, D., Dawood, H., Pillai, G., & Short, M. (2022). A Qualitative Based Causal-Loop Diagram for Understanding Policy Design Challenges for a Sustainable Transition Pathway: The Case of Tees Valley Region, UK. *Sustainability*, 14(8), [4462]. <https://doi.org/10.3390/su14084462>
7. Francis, C., Gudlaugsson, B., Thomson, R. C., & Ingram, D. (2022). *Exploring the challenges in developing a multi-criteria assessment for smart local energy systems*. Paper presented at Energy Evaluation Europe 2022. [Awaiting Link]