

# Delivering learning and accountability: experience from UK Government energy evaluations

Laura Edwards & Tajbee Ahmed



# Introduction

- How we have developed our evaluations since 2011
- How we've met the challenges of:
  - designing proportionate evaluations that deliver accountability and learning
  - Meeting policy makers needs
- What lessons have we learned that will help us evaluate energy transformation policies?

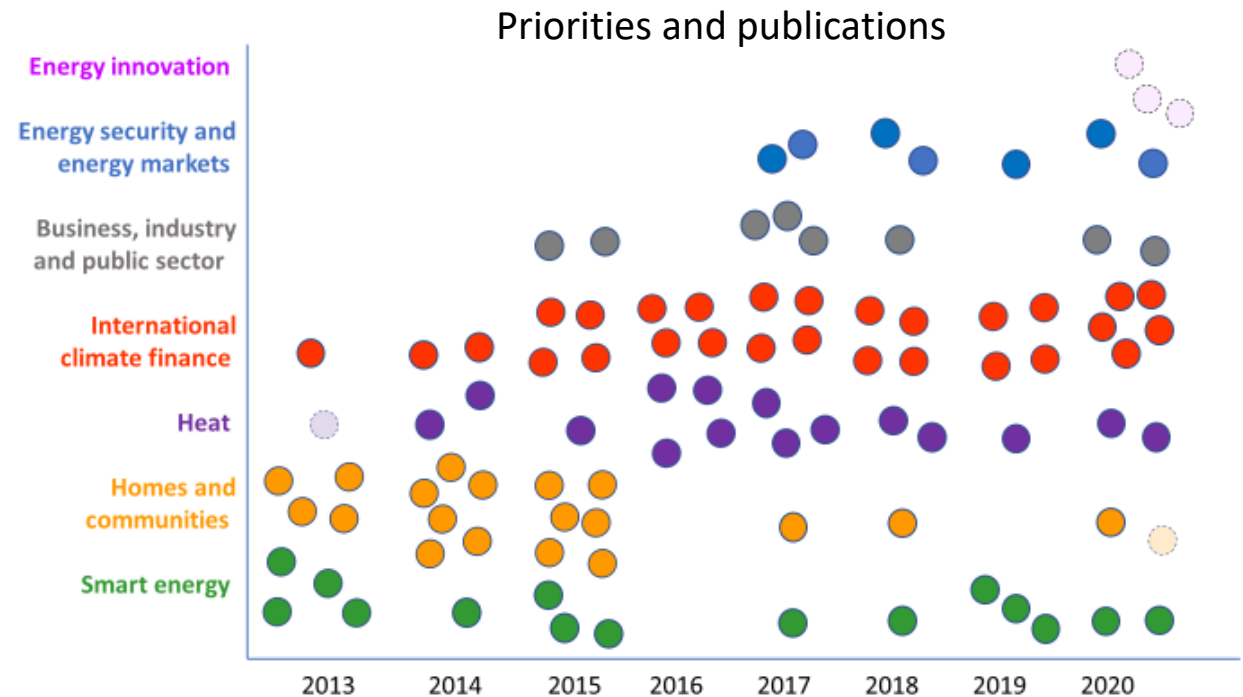
# An evaluation journey

## Ten years ago...early evaluations and monitoring of:

- Smart metering
- Community /home energy and
- Renewable heat
- International Climate Finance

## Now...

- More evaluations across most energy topics
- More methodologies applied
- More evaluation staff
- More guidance and development as evaluators



# Our principles for evaluation



- Accountability: how taxpayers' money is spent



- Learning: support the development, implementation, and improvement of policies



- Proportionate in scale: based on policy profile/strategic importance, level of risk, cost, learning potential



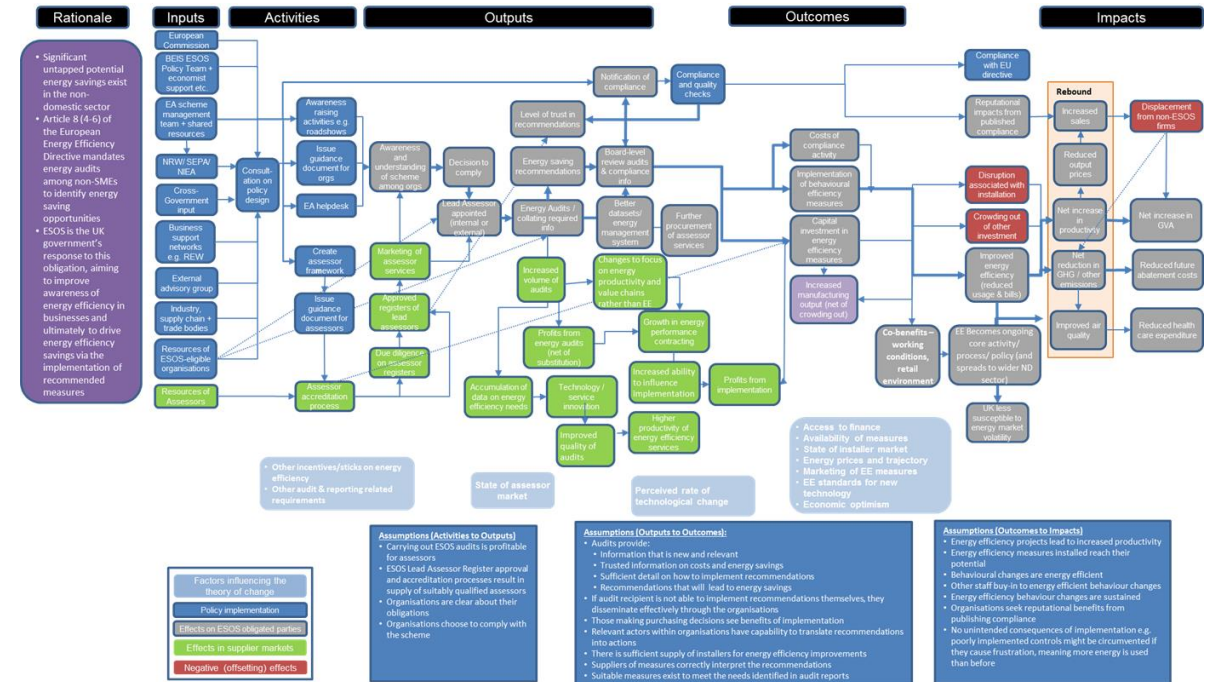
- Working closely with policymakers and operational colleagues: evaluation findings that are useful, accessible and timely



- Dedicated evaluation resource provides the design and delivery of programme evaluations, from within BEIS.

# Methods, approaches and delivery

- Start with a **theory of change**: how the intervention is expected to work
- Effective **monitoring** as a foundation: continuous measurement and performance review of an intervention.
- Use of **mixed methods**: approaches with the collection of multiple sources of qualitative and quantitative primary data
- Building **triangulation** into evaluation design and analysis
- Adopting **theory-based approaches**, including realist evaluation: why change occurs, for who and how



# Lessons learned from our evaluation journey

- **Multiple perspectives and evidence sources** to fully evaluate policies within the complex energy landscape
- **Working closely with policymakers** within BEIS to ensure that we understood their needs and to convince them of the value of our evaluation findings
- **Timeliness** of our evidence: matching speed of policy decision making with evaluation delivery
- **Flexibility** adapting evaluation plans when needed to suit changes in policy direction
- **Quality assurance and scrutiny** casting the net wide for internal and external input into our evaluations both for robustness and wider evidence

# Meeting new challenges

- How to evaluate new policies?
- How to evaluate and develop new policies at speed?
- How do we evaluate not just individual policies but more portfolios and programmes?
- How do we keep innovating to meet these demands?
- How do we build in additional evaluations of ‘non-energy’ impacts and co-benefits?